

Historic, Archive Document

Do not assume content reflects current scientific knowledge, policies, or practices.

RECEIVED
★ OCT 30 1950 ★



LC. BERGENFIELD

(Lc. Cynthia Church X C. Titrianae)

H. Patterson & Sons, Bergenfield, N.J.

Orchidhaven

1950 CATALOGUE



Orchidhaven

1950

On these pages you will find the 1950 Orchidhaven list, covering Seedlings from 2½ inch pots up to and including Blooming size plants.

Each of the brief descriptions contains as much information as possible about what may be expected from these seedlings when they reach maturity. This information is based on our own experience with each particular batch. Such data is buttressed by the fact that we have made many repeat crosses with identical parents.

Experience, of course, is vital in the production of Hybrids. We, at Orchidhaven, are experienced at creating varieties that possess distinctive characteristics. Attention to the selection of parents, based on our knowledge of parental qualities, is one of the chief reasons why Orchidhaven blooms are renowned everywhere. Care and knowledge are watchwords at Orchidhaven.

Our constant aim is to combine the qualities which give the Orchidhaven products their reputation as sturdy, healthy and prolific plants. These qualities are FINE GROWTH . . . PRODUCTIVITY . . . COLOR . . . SIZE . . . TEXTURE . . . and, last but not least, SEASONAL BLOOMING. We are proud that these qualities have become synonymous with the name of Orchidhaven in every part of the world.

Here are some points that should be checked by you when you order:

- 1 The list is complete, as far as possible. A few crosses, in addition to those listed, are available. Please inform us if your special requirements are not listed. We may have just what you desire.

- 2 In selecting a number, please name a second choice as a replacement, in the event that the first number is sold out.
- 3 Virtually all plants sold by Orchidhaven are ready for a shift during their present growing season. The reason is we do not over-pot.
- 4 Orchidhaven plants are shipped to every part of the United States and its possessions, Canada, Central and South America, Cuba and the Philippine Islands. We are equipped to comply with special Hawaiian regulations affecting imports of Orchid Plants.
- 5 Kindly send estimated shipping costs for overseas deliveries in order that shipments may be prepaid to avoid delays. Our own experience with air mail and air express to all countries has been found highly satisfactory for delivery.
- 6 We prefer to ship plants out of pots, placing plants with compost intact in paper pots. This method greatly decreases shipping cost. Packing by Orchidhaven is free of charge for all plants listed on these pages. Prices are F.O.B. Bergenfield, N. J., in U. S. Dollars.

We cordially invite you to visit Orchidhaven, which is only ten miles from Times Square, New York City. We are proud of our plants and are always glad for the opportunity to show you the methods which produce the famous Orchidhaven varieties. Our latchstring is out to you at all times.

VIGOR

Natural vigor is a feature of every item offered by Orchidhaven.

In all organic reproduction, the cells responsible for the perpetuation of characteristics may or may not be vigorous. But this factor can be controlled by proper selection. Scientific knowledge and practical experience are combined in crosses at Orchidhaven in selecting parents endowed with a remarkably high degree of vigor. That is why the Orchidhaven products have won a reputation everywhere for their growing strength and natural vitality.

The resources at Orchidhaven for the successful attainment of vigor as a characteristic in hybrids are unsurpassed. More than one thousand new hybrids have been produced with healthy and strong growing qualities. Our files contain testimony to the fact that unusually numerous flowerings on a single stem, even in large type hybrids, make the rule rather than the exception.

In the fission of cell life, the orchid hybrid gains new individuality but the question is: will this gain be at the expense of life-giving strength? The reply from Orchidhaven is that vigor is a prime essential in every one of our hybrids. We make that statement confidently because we have given this factor intensive study and application. It is a fact confirmed far and wide by our satisfied customers. You may be assured that, in addition to other essential qualities, the Orchidhaven seedlings and blooming plants are outstanding for their vigor, health, and growing capacity.



Lc. Geo. Baldwin (Lc. Princess Margaret #2 X C. Enid Var. Orchidhaven). This cross has been made again and again at Orchidhaven with identical parents. Results have always been most satisfactory. This is the second time this plant bloomed.

Unflowered Cattleya and Laeliocattleya Hybrids in 2½-3 & 3½ inch Pots

A most extensive collection of outstanding and excellent crosses is listed in the following pages in 2½ inch, 3 inch and 3½ inch pots. We have been extremely careful to make this list a very complete one with regard to colors and seasons where flowers are needed. These crosses will be of great interest both to amateurs and commercial growers.

Cross No.	Name, Parentage and Description	Size	Each
505	C. Trimos (C. Mossiae No. 24 X C. Trianae Gold Lip) An old dependable cross for February and March is repeated here with very fine parents. The flowers should be of medium color and the plants from any former cross of the same parents have grown very well. When the proper parents are selected such as the case is here, flowers of good texture can well be expected. We have had a number of these plants bloom and the results have been very fine. The season, of course, as stated is the same, February and March, making this a valuable cross for the commercial grower wanting flowers for early Easter.	3" Pots 3½" Pots	\$ 8.00 \$10.00
529	C. Lorraine Sawtelle (C. Barbara Dane X C. Clementine Goldfarb) September is a month which is generally shy as far as Whites are concerned. Commercial growers are always at wits-end to cope with the demand during this season. The two parents used here always bloom during this period. Two very excellent types were used in this cross. Both are very excellent growers.	3" Pots 3½" Pots	\$ 8.00 \$10.00
542	C. Enid Alba (C. Mossiae "Reineckiana" Young's Variety X C. Gigas "F.M.B.") Our full confidence in this grand Hybrid has prompted our remaking this cross again and again. Please refer to description under No. 565.	2½" Pots 3" Pots 3½" Pots	\$ 3.00 \$ 8.00 \$10.00
543	C. Alice Pearce (C. Mossiae "Reineckiana" Young's Variety X C. Princess Royal Alba) A fine Spring blooming White Colored Lip is the result from the union of these two great parents. C. Mossiae "Reineckiana" (Young's Variety) has a great many new Hybrids to its credit. Since our last writing a few of these Hybrids have bloomed. The season is early spring through late spring and the flowers are a remarkably clear white in sepals and petals with a very fine lip. Incidentally, this Hybrid is an excellent grower.	3" Pots 3½" Pots	\$ 8.00 \$10.00
544	C. Enid Alba (C. Mossiae "Reineckiana" Young's Variety X C. Gigas "F.M.B.") Any of the times we remake this Hybrid it is always with the same parents. You can purchase with this assurance. Please refer to description under No. 565.	3" Pots 3½" Pots	\$ 8.00 \$10.00

Cross No.	Name, Parentage and Description	Size	Each
545	C. Alesia (C. Mossiae "Reineckiana" Young's Variety X C. Dionysius Alba No. 97) Here again we have a very fine Spring White with Colored Lip. We use a particular Dionysius Alba which has made some wonderful Hybrids for us. The famous C. Mossiae "Reineckiana" (Young's Variety) is the other half of this cross. Season is May and June. We have bloomed several plants of this variety and also have a number in bud and through the past year they have grown very well.	3" Pots 3½" Pots	\$ 8.00 \$10.00
547	C. Marion Patterson (C. Marion Davies X C. Trianae "Broomhills Variety") The union of these two wonderful parents produces a White Hybrid which blooms during the months of March and April making it a very valuable Easter White. Blooms are of extremely firm texture and growth has been very strong through the seedling stage. The flowers are an excellent clear white with a minimum amount of yellow in the throat, are very large and from the first few plants which bloomed they are sure to be excellent producers.	3" Pots 3½" Pots	\$ 8.00 \$10.00
548	C. Evamay Patterson (C. Intertexta "Juliettee" X C. Trianae "Broomhills Variety") The crossing of these two Cattleyas has brought about a fine new Hybrid which is well shaped, large sized, excellent in texture and a strong grower. The most important asset of this new White Cattleya is the fact that it blooms during early Spring through Easter. We have bloomed twelve plants of this variety and they have certainly come up to our expectations.	3" Pots 3½" Pots	\$ 8.00 \$10.00
551	C. Catherine Patterson (C. Enid Alba XXXX Best X Mrs. Frederick Knollys) The fine growing character of both these crosses makes an excellent Winter White Colored Lip. Both parents are extremely large flowers with very fine lips. Both parents always bloom during January, February and March.	2½" Pots 3" Pots 3½" Pots	\$ 3.00 \$ 8.00 \$10.00
552	C. Mlle. Louise Pauwels (C. Edithae No. 1 XXXXX X C. Intertexta "Juliette" No. 158) This is an excellent grower for the months of February and March. This particular Edithae used here never blooms until the first week in March or later. The intertexta used is a fine type from a large seedling batch raised at Orchidhaven.	2½" Pots 3" Pots	\$ 3.00 \$ 8.00
553	C. Yvonne Adair (C. Clementine Goldfarb X C. Pegeen Fitzgerald) An exceptionally strong growing and very large White for November and December is the result of this union of two grand White Hybrids. It is not at all uncommon to have Clementine Goldfarb make two growths per year on a single lead plant. Flowers are always very large and it is not unusual to see flowers to the number of four on a stem. C. Pegeen Fitzgerald can always be remembered for its paper whiteness and very fine form.	2½" Pots 3" Pots 3½" Pots	\$ 3.00 \$ 8.00 \$10.00

Cross No.	Name, Parentage and Description	Size	Each
554	Lc. American Security (C. Royana X Lc. Princess Margaret) C. Royana is an exceptionally strong growing Cattleya of large size. Its color is very dark with exceptionally dark lips with a wonderful suffusion of yellow. A union with Princes Margaret makes this a great Hybrid for the months of May, June and July with a few plants blooming as late as November. Growth is most outstanding and the season, of course, is very advantageous with the main crop blooming directly after Mossiae. Lc. American Security is very similar to Lc. George Baldwin except that for the most part it is a much darker flower and possibly a little better in shape.	3" Pots 3½" Pots	\$ 8.00 \$10.00
555	Lc. Joseph Medill Patterson (Lc. Princess Margaret X C. Tappan) We are using Princess Margaret in a number of different ways with very strong growing Hybrids only. This particular cross yields an exceptionally strong growing Hybrid for late Fall of that dependable Princess Margaret type.	2½" Pots 3" Pots 3½" Pots	\$ 3.00 \$ 8.00 \$10.00
557	C. Myron McCormick (C. Dinah x Lc. Excelsior X C. Mossiae "R.E. Patterson") Here again we have an Easter blooming Hybrid. C. Mossiae "R.E. Patterson" is the darkest Mossiae we know of and it is of the early type, well shaped and of very good substance. The Hybrid used on this Mossiae has a splendid shape and always has an extra dark lip. This is a very outstanding Hybrid for Spring Blooming purposes.	3" Pots 3½" Pots	\$ 8.00 \$10.00
558	C. Bing Crosby (C. R. Cadwalader X C. Royana) There has been in the past a particular deficiency of quality Hybrids during May and June. In making this particular cross we have helped to bridge this specific period. Both parents are very strong growers.	3½" Pots	\$10.00
559	C. Margaret Moran (C. Royana X C. Carmen) Here again we make a bid for a May and June Hybrid of good quality to cover a sparse period in Hybrids. Both parents were of a very dark color and had exceptionally well colored lips. A strong growing plant is the result.	3" Pots 3½" Pots	\$ 8.00 \$10.00
560	C. Margaret Moran (C. Royana X C. Carmen) Please refer to No. 559 for description.	3" Pots 3½" Pots	\$ 8.00 \$10.00
564	Lc. Arthur Miles (Lc. Sagana "Variety Easter" X C. Mossiae) This is a repeat cross for us. We have made it again because all of the earlier batches have proven most successful in making a large, dark free growing Hybrid for the Easter season.	3" Pots 3½" Pots	\$ 8.00 \$10.00

Cross No.	Name, Parentage and Description	Size	Each
565	C. Enid Alba (C. Mossiae "Reineckiana" Young's Variety X C. Gigas "F.M.B.") Earlier buyers of this old cross remade with identical parents have been most anxious to enlarge their stock of this great Hybrid. Strangely enough all of our earlier batch blooms in January, February and March. The flowers are large, well shaped and they are paper white in sepals and petals. The lips are large and very interesting.	2½" Pots 3" Pots 3½" Pots	\$ 3.00 \$ 8.00 \$10.00
566	Lc. Bou Filippo (Lc. Windermere X C. Mossiae "R.E. Patterson") This is a repeat cross of which we have bloomed three other crosses with the identical parents. We are very certain the results again will be as before. The flowers fill a great need for exceptional Hybrids for the Spring season; a season which, at the present time, is devoid of quality Hybrids in quantity.	2½" Pots 3" Pots 3½" Pots	\$ 3.00 \$ 8.00 \$10.00
567	Lc. Arthur Miles (Lc. Sagana "Easter Variety" X C. Mossiae "R.E. Patterson") Please refer to No. 564 for description.	3" Pots 3½" Pots	\$ 8.00 \$10.00
568	Lc. Bou Filippo (Lc. Windermere "A.M." Var. X C. Mossiae "Oliver Lines") For several years we have been blooming this particular cross under our No. 285 and we have had some very excellent types. One of the main reasons for the great value in this cross is its particular season; we have always cut a great number of flowers for Easter. It can be handled a good deal like Mossiae and its grand performance as far as season, quantity of flowers and fine growing qualities are concerned, has prompted us to remake this cross again and again. To date it has been one of our finest type Mossiae Hybrids. We repeat this cross with the identical parents which made No. 285.	3" Pots 3½" Pots	\$ 8.00 \$10.00
569	Blc. Sherman Billingsley (Blc. Eva Patterson X C. Belgica "A.M." Variety) Our quest here is for fine Hybrids for December and January covering the Holiday season of the year. Both parents are very strong growers. Flowers should also be very large. The C. Belgica which was used received an award at the A.O.S. meeting in December 1947. We have bloomed a few of these plants and they have certainly come up to our expectations.	2½" Pots 3" Pots 3½" Pots	\$ 3.00 \$ 8.00 \$10.00
570	Lc. Ray Bolger (Lc. Windermere "A.M." X C. Enid XXXX) We have remade this cross with identical parents as our earlier batch has been so very satisfactory. The flowers of the previous batch were large, dark and well shaped, and texture was very good. The plant is a very strong grower.	2½" Pots 3" Pots 3½" Pots	\$ 3.00 \$ 8.00 \$10.00

Cross No.	Name, Parentage and Description	Size	Each
571	Lc. Carol Channing (Lc. Derrynane "Var. Henrietta Patterson" X C. Royana "Extra Fine") Two exceptional Hybrids were used here. Lc. Derrynane is a very good Hybrid derived from Lc. Princess Margaret. C. Royana was described elsewhere in this list.	2½" Pots 3" Pots 3½" Pots	\$ 3.00 \$ 8.00 \$10.00
572	Lc. George Lewis (Lc. Helen Wilmer "A.M." Variety X Lc. Altesse) Both Lc. Helen Wilmer and the Lc. Altesse which were used were exceptionally dark flowers. It is a very strong grower producing dark flowers of fine texture, good form and excellent quality with a blooming season from December through March. It is similar to our popular Lc. Governor Gore and will prove very valuable to both the commercial and amateur growers.	2½" Pots 3" Pots 3½" Pots	\$ 3.00 \$ 8.00 \$10.00
573	C. Enid Alba (C. Mossiae "Reineckiana" Young's Variety X C. Gigas "F.M.B.") Please refer to description under No. 565.	2½" Pots 3" Pots 3½" Pots	\$ 3.00 \$ 8.00 \$10.00
574	C. Claire August (C. Mount Raphoyal X C. Mossiae "R.E. Patterson") The Hybrid used on C. Mossiae "R.E. Patterson" was an extremely dark and well shaped flower of great substance. The lip of this particular Hybrid was very dark with large yellow eyes. The flower over all was very large. We again use our old standby, Mossiae "R.E. Patterson."	3" Pots 3½" Pots	\$ 8.00 \$10.00
575	Lc. Ernie Pyle (Lc. Altesse X C. Mossiae "R.E. Patterson") This cross was remade with our fine dark Mossiae "R.E. Patterson." When we first made this particular cross we were very happy over the fact that the first plant bloomed in three years and four months from seed. When this plant was six years old it bloomed on seven bulbs; the reason being, on single lead parts of the plant two growths have been put up each blooming year. The flowers which we cut on this plant last year numbered twelve blooms. The plant is now a strong double lead plant.	3" Pots 3½" Pots	\$ 8.00 \$10.00
577	Lc. George Baldwin (Lc. Princess Margaret No. 2 X C. Enid "Variety Orchidhaven") We remake this particular cross once again with the best parents obtainable assuring fine results. Little need be said in its behalf for in the short time of its existence it has already won a great many awards. Our firm has raised and flowered several batches of this great Hybrid and through the knowledge gained thereby feel qualified in repeating this exceptional cross from time to time. Season is remarkable, starting in May and blooming through the Fall with a number of the plants blooming for the second time throughout the Winter, especially if plenty of light is afforded the plants while in growth. Flowers are always large and well shaped. Substance is excellent. Color is mostly dark.	2½" Pots 3" Pots 3½" Pots	\$ 3.00 \$ 8.00 \$10.00

Cross No.	Name, Parentage and Description	Size	Each
578	Lc. George Baldwin (C. Enid "Variety Orchidhaven" X Lc. "Princess Margaret")		
	Please refer to description under No. 577.	2½" Pots	\$ 3.00
		3" Pots	\$ 8.00
		3½" Pots	\$10.00

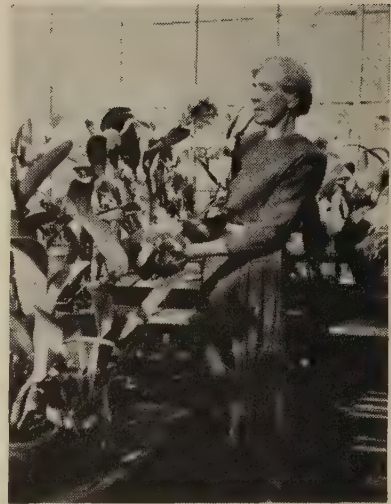
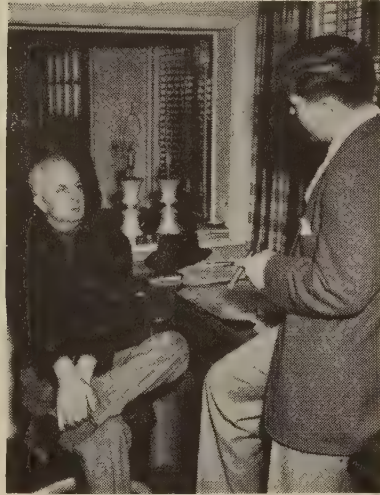
Seedlings in 3 inch Pots and Up

399	C. Helen Durfee (C. Clementine Goldfarb & C. Ben Nevis)		
	One of the very useful things in White Cattleyas is to have fine flowers in the months of September, October and November. This season is a busy one for the commercial man and is a most enjoyable time to have flowers for the amateur flower shows. A great number of plants of this Hybrid have already bloomed and have proven most satisfactory. Flowers are well shaped and of good texture. This Hybrid is an excellent grower.	3½" Pots	\$12.00
		4" Pots	\$14.00
		4½" Pots	\$16.00
400	C. Frances Carlsen (C. S.E. Endicott X C. Clementine Goldfarb)		
	The season for this Hybrid is about the same as No. 399. It is also a very fine grower. Many plants are putting up as many as two growths per year on a single lead plant. It is not unusual for a stem to bear as many as four flowers.	3½" Pots	\$12.00
		4" Pots	\$14.00
		4½" Pots	\$16.00
401	C. Enid (C. Mossiae "R.E. Patterson" X C. Gigas)		
	This is a repeat cross of a very dependable Cattleya. Two very fine parents were used. C. Enid has always been known for its fine growing characteristics. Flower production has always been above average in this particular cross.	3½" Pots	\$12.00
		4" Pots	\$14.00
		4½" Pots	\$16.00
404	Lc. Ruth Jonson (C. Admiration X Lc. Altesse "Var. Orchidhaven")		
	An abundance of C. Remy Chollet in this cross will go a long way in making it a fine Hybrid. Both parents are of the best type procurable. Several of the 3½ inch plants have bloomed. The flowers were very dark and very well shaped. The plants continue to grow like either one of the parents.	3½" Pots	\$12.00
		4" Pots	\$14.00
		4½" Pots	\$16.00
419	C. St. Petersburg (C. Clementine Goldfarb "Osmers Var." X C. Eucharis "Var. Orchidvale")		
	C. Clementine Goldfarb (Osmers Variety) is a proven pure White which is an extremely vigorous grower. In flower production it is unexcelled. It always makes two growths on single lead plants. The C. Eucharis which was used was the best procurable. Season is variable, the main crop coming in during January, February, March and April with some blooming at late as mid-summer. C. St. Petersburg was named in honor of the first Orchid Show held in St. Petersburg, Florida on April 2nd, 1949.	3½" Pots	\$12.00
		4" Pots	\$14.00
		4½" Pots	\$16.00
		5" Pots	\$18.00



*Edwin Patterson inspects
Mossiae bud count*

*George Patterson confers with
one of Orchidhaven's field
representatives*



*Hybrid blooms are admired by
Henrietta Patterson*

At Orchidhaven, the work of growing orchids is shared by Mrs. Henrietta Patterson and her three sons, representing an absorbing interest which completely dominates the family and accounts in large part for the success of the company. Edwin is in charge of general operations, the growing of the plants and their care; George assumes responsibility for the details of business administration; while Harold J. carries on the hybridizing and plant selling. Mrs. Patterson has the important job of seeing that these beautiful plants and flowers reach all parts of the world in the same state of perfection as when leaving Orchidhaven.

A group of prize-winning Patterson Hybrids at recent New York Flower Show





Harold J. Patterson hybridizing a rare Hybrid

THREE OUTSTANDING HYBRIDS WHICH WERE RAISED AT ORCHIDHAVEN

LC. WALTER WINCHELL. This Hybrid is an extremely large, well shaped, dark flower of great texture. Growth is exceptional and season of bloom is Fall and Winter.

LC. ALTEN. This Hybrid is a very strong grower with extra large flowers which are much darker than most Enids. The lip is very dark and exceptionally large. It blooms during January, February and March.

LC. EUGENIE. This White Colored Lip has a blooming season of October through December. It is a very vigorous grower and its sepals and petals are paper white with a deeply colored lip. In its particular class flower production is unequalled.

Lc. Walter Winchell
C. Tappan X Lc. Dupresan



Lc. Alten
Lc. Altesse "Var. Orchidhaven" X C. Enid "Var. Orchidhaven"

Lc. Eugenie
Lc. Schroderae Alba X C. Dionysius Alba



Cross No.	Name, Parentage and Description	Size	Each
420	C. St. Petersburg (C. Eucharis "Var. Orchidvale" X C. Clementine Goldfarb "Osmers Var.") We refer you to description under No. 419.	3½" Pots 4" Pots 4½" Pots 5" Pots	\$12.00 \$14.00 \$16.00 \$18.00
426	C. Florence Patterson (C. Clementine Goldfarb X C. Rita Sladden) This cross is a very strong growing Pure White for Fall and early Winter. Flowers are large and of excellent substance.	3" Pots 3½" Pots 4" Pots 4½" Pots 5" Pots	\$ 8.00 \$12.00 \$14.00 \$16.00 \$18.00
428	Lc. Alten (Lc. Altesse "Var. Orchidhaven" X C. Enid "Var. Orchidhaven") We have repeated this cross because of the very fine results of an earlier cross with the same parents. The result has been an extra large flower much darker than most Enids. The lip is very dark and exceptionally large. The season is January, February and March. Both parents are exceptionally strong growers and so far this particular batch is also very strong in growth.	3½" Pots 4" Pots 4½" Pots	\$12.00 \$14.00 \$16.00
429	Lc. Walter Winchell (C. Tappan X Lc. Dupresan) This Hybrid was pictured in one of our advertisements. It is a very large, well shaped, dark flower of great texture. Growth is exceptional.	4½" Pots 5" Pots	\$16.00 \$20.00
431	Lc. Jack McCauley (C. Treda X Lc. Altesse) The presence of C. Leda in C. Treda will go far in imparting high color to this Hybrid. All of the components bloom in the Winter. The resulting Hybrid is a very fine grower.	3½" Pots 4" Pots 4½" Pots 5" Pots	\$12.00 \$14.00 \$16.00 \$18.00
432	Lc. Ethel Merman (Lc. Jane Dane X Lc. Canhamiana Alba) One of the hardest seasons to breach with a good White with a Colored Lip is in the late Winter and early Spring months. After a great many attempts to make the above cross we have finally succeeded in making, what we in our opinion believe, is a most outstanding cross in this class. Season is February to April.	3½" Pots 4" Pots 5" Pots	\$12.00 \$14.00 \$20.00
433	C. Frances Cohn (C. Enid X Lc. Dupresan) Two very strong growers have been used here to make this cross. Resulting Hybrid is of medium dark color. The size is very good as both parents are inclined to be large. Season is December.	3½" Pots 4" Pots 4½" Pots	\$12.00 \$14.00 \$16.00
436	Lc. Ann Morgan (Lc. Dupresan X C. Magowa) An extremely strong growing Hybrid of fine coloring especially in the labellum should be the result of this crossing. Earlier use of both parents in other crosses have resulted in some very excellent Hybrids. Season of bloom should be November and December. Commercial growers could use this Hybrid for their Thanksgiving and Christmas markets.	3½" Pots 4" Pots 4½" Pots	\$12.00 \$14.00 \$16.00

Cross No.	Name, Parentage and Description	Size	Each
441	C. Enid (C. Mossiae X C. Gigas) No collection would be complete without C. Enid. We make this cross from time to time in order to insure the amateur and market grower a dependable supply.	3½" Pots 4" Pots 4½" Pots	\$12.00 \$14.00 \$16.00
455	C. Clotho (C. Enid & C. Trianae) Season is the outstanding part of this cross. It is a sure midwinter FLOWER. Growth is always excellent.	3½" Pots 4" Pots 4½" Pots	\$12.00 \$14.00 \$16.00
456	C. Iva Withers (C. Remy Chollet X C. Cherokee) The season which will be covered by this Hybrid should be November and December as both sides of the cross bloom at this time of the year. Both are very strong growers.	3½" Pots 4" Pots 4½" Pots	\$12.00 \$14.00 \$16.00
457	C. Peter Sander (C. Remy Chollet "Dark Type" X C. Mossiae "Dark") The fine results of this cross when it was originally made prompted us to remake this fine Hybrid. Both parents were exceptional in their class.	3½" Pots 4" Pots 4½" Pots	\$12.00 \$14.00 \$16.00
458	Lc. Lydia Johnson (Lc. Mermoz X C. Mossiae "R.E. Patterson") A scarce time for Cattleya and Laeliocattleya blooms is the months of February and March. Lc. Mermoz generally blooms during January and February. The Mossiae used here is a very fine dark type which we have used over and over again and always with excellent results. Similar crosses have generally bloomed during the months of February, March and into April.	3½" Pots 4" Pots 4½" Pots	\$12.00 \$14.00 \$16.00
460	Lc. Byron Palmer (C. Mahopac X Lc. Altesse) Both parts of this cross have always bloomed between November and December. A most desirable time for both the amateur and market grower. Vigor is assured because of the strong growing character of both parents.	3½" Pots 4" Pots 4½" Pots	\$12.00 \$14.00 \$16.00
461	C. Peter Sander (C. Remy Chollet X C. Mossiae) Hybrids for the Easter season will be assured by this cross. In other words, here will be a glorified Mossiae.	3½" Pots 4" Pots 4½" Pots	\$12.00 \$14.00 \$16.00
462	C. Lou Morgan (C. Treda X C. Mossiae "R.E. Patterson") A bright dark and well shaped flower for Easter blooming period should be the result of this cross. Both parents are very strong growers.	3½" Pots 4" Pots 4½" Pots	\$12.00 \$14.00 \$16.00
464	Lc. Arthur Miles (Lc. Sagana X C. Mossiae) Earlier results of this grand cross prompted our repeating it. Season is definitely Easter. Some very exceptionally fine colors were noted in our earlier batch. It will make good Mossiae replacement material.	3½" Pots 4" Pots 4½" Pots	\$12.00 \$14.00 \$16.00

Cross No.	Name, Parentage and Description	Size	Each
465	Lc. Arthur Miles (Lc. Sagana "Var. Easter" X C. Mossiae "Oliver Lines") This is a repeat cross with IDENTICAL parents. The excellent results of the earlier cross have prompted our remaking this fine Hybrid. The result has been a very much glorified Mossiae. Season is just a bit ahead of our regular Mossiae season. This provides a fine Hybrid which does not have to be forced for Easter. It also will provide the amateur with an excellent Hybrid for that very scarce winter period.	3" Pots 3½" Pots 4" Pots 4½" Pots	\$ 8.00 \$12.00 \$14.00 \$16.00
468	Lc. Mary Martin (C. Hardyana Alba X C. Jane Dane) Union of these two very fine parents should result in a fine White with Colored Lip for September, the month of weddings.	3½" Pots 4" Pots 4½" Pots	\$12.00 \$14.00 \$16.00
478	Lc. George Baldwin (Lc. Princess Margaret "Extra Fine Var." X C. Enid) This repeat Hybrid is amply described in our Cross Numbered 425.	3½" Pots 4" Pots 4½" Pots	\$12.00 \$14.00 \$16.00
479	C. Florence Patterson (C. Rita Sladden X C. Clementine Goldfarb) This is a reverse cross of No. 426. It is one of our strongest growing white crosses.	3½" Pots 4" Pots 4½" Pots	\$12.00 \$14.00 \$16.00
482	C. Old Forester (C. Enid X C. Charybdis) The fine growing qualities of C. Enid merged with the other Hybrid used here makes this a very desirable Hybrid for late Winter and Spring months. C. Old Forester should go a long way in helping to bridge this particular season when there is an apparent shortage of quality Hybrids. It is an exceptionally heavy textured flower of great substance and the color is real dark, bright fuchsia-orchid having a well shaped lip with fine yellow in the throat.	3½" Pots 4" Pots 4½" Pots 5" Pots	\$12.00 \$14.00 \$16.00 \$20.00
486	Lc. Cynthia "F.C.C.-R.H.S." X (C. Trianae "Reineckiana" x C. Dionysius Alba) Both components of this cross are fine growers and Winter bloomers. Fine quality flowers should be the expectation here.	3½" Pots 4" Pots 4½" Pots	\$12.00 \$14.00 \$16.00
487	C. Maureen Orcutt (C. Lady Alexander Alba X C. Royal Harold Alba) A need for a free growing White for the Fall wedding season prompted this cross. Both parents are paper white in the petals and sepals with very brilliant lips.	3½" Pots 4" Pots 4½" Pots	\$12.00 \$14.00 \$16.00
489	C. Maureen Orcutt (C. Royal Harold Alba X C. Lady Alexander Alba) We refer you to description under No. 487.	3½" Pots 4" Pots 4½" Pots	\$12.00 \$14.00 \$16.00

Cross No.	Name, Parentage and Description	Size	Each
493	C. Vanir (C. Gravesiana Alba X C. Mossiae "Wagnerii") Our quest here is for a good growing White for the Easter season. Both parents are strong growers and they are proven White breeders.	3½" Pots 4" Pots 4½" Pots	\$12.00 \$14.00 \$16.00
494	C. Mlle. Louise Pauwels (C. Edithae No. 1 X C. Intertexta "Juliette") Here again we use our very late Edithae No. 1. The intertexta "Juliette" is a proven white breeder which always blooms during the Spring months. Season should be March, April and May because of the variable blooming habit of intertexta "Juliette."	3½" Pots 4" Pots 4½" Pots	\$12.00 \$14.00 \$16.00

Mature Plants

16	C. Sweet Sixteen (C. Princess Royal X C. Marjorie) A strong growing Cattleya for September and October is the result here. It is unexcelled for flower production. The flowers are large and they are good keepers. The plant is of the compact type having small rhizomes.	5" Pots	\$20.00
32	Lc. Charles Futterman (Lc. Callistoglossa X C. Clotho) Large bright flowers born on a strong growing plant have been the result of this union of two exceptional growers. The season is variable stretching from October into the Winter months.	4½" Pots 5" Pots 5½" Pots	\$15.00 \$20.00 \$25.00
42	C. Raphaellaurea (C. Raphaelii X C. Ballaurea) Here again the parent, C. Raphaelii lends itself to make a fine Fall blooming Cattleya of good shape and substance. Blooming time is September and October.	4½" Pots 5" Pots	\$15.00 \$20.00
46	C. Cherokee (C. Raphaelii X C. Ballantineana) Two very old and very dependable Hybrids have been united here. The results have been most gratifying. A strong growing well shaped Hybrid which blooms during September, October, November and December has resulted.	4½" Pots 5" Pots	\$15.00 \$20.00
51	C. Tappan (C. Raphaelii X C. Elizabeth S. Prentiss) A highly colored and strong growing Fall Blooming Cattleya has resulted from uniting these two exceptional parents. The plant is an extremely strong grower. We have used this particular cross in making our very excellent Hybrid Lc. Walter Winchell. Flower production is exceptional.	4½" Pots 5" Pots	\$20.00 \$25.00
54	C. Prince John Alba X C. Prince John Alba A number of very interesting types have been flowered from this particular batch, having very slightly colored lips. Season is June through August.	4½" Pots 5" Pots	\$20.00 \$25.00

Cross No.	Name, Parentage and Description	Size	Each
57	C. Magowa (C. Raphaelii X C. Ottawa) Here again we go on using C. Raphaelii and we do this because of its great dependability. The season this Hybrid blooms is September, October and November. We have flowered a great many fine forms of this strong growing Cattleya.	4½" Pots 5" Pots	\$20.00 \$25.00
95	C. Royana (C. Mt. Royal X C. Hardyana) An excellent Spring bloomer for the Spring months has been the result here. Blooming season is May and June. A great many of the plants are exceptionally dark.	5" Pots 5½" Pots	\$20.00 \$25.00
98	C. R. Cadwalader X C. R. Cadwalader A need for late Spring flowers prompted remaking this particular cross. Many highly colored Hybrids of good character have resulted in this remade Hybrid.	4½" Pots 5" Pots	\$18.00 \$22.00
103	Lc. Eugenie (Lc. Schroederae X C. Dionysius Alba) We herewith present an exceptional new White Colored Lip which has a blooming season of October through December. The flower is exceptionally large and the plant is an extremely strong grower. In its particular class flower production is unequalled.	4" Pots 4½" Pots 5" Pots	\$30.00 \$35.00 \$40.00
209	Lc. Brittonia Alba (C. Gigas "F.M.B." X Lc. Canhamiana Alba) This is a repeat cross with two excellent parents. The result has always been a fine growing White with Colored Lip. Season is March through May.	4" Pots 4½" Pots	\$20.00 \$25.00
210	C. Thomas C. Kirkwood (C. Princess Royal Alba X C. Gigas "F.M.B.") An early Fall White Colored Lip has resulted from this union of two old dependable types.	4½" Pots	\$25.00
218	Lc. Edith Dorp (Lc. Jane Dane X Lc. Schroederae) This Hybrid has bloomed for us during the past four years. It is a paper White with an exceptionally dark Colored Lip. Laeliocattleya growth is exceptional. We have had some very fine form which we have used in the different flower shows. Texture of all of the flowers has been very good. The flowering season is a long one, it extends from September into January.	4½" Pots 5" Pots 5½" Pots 6" Pots	\$20.00 \$25.00 \$30.00 \$40.00
220	Blc. Fred Danker (Blc. Cliftard X C. Empress Frederick) A medium colored Brassolaeliocattleya has been the result here. Blooming time is April and May. The plant is an exceptional grower.	4½" Pots 5" Pots	\$20.00 \$25.00

Cross No.	Name, Parentage and Description	Size	Each
248	C. Ethel Bishop (C. S.E. Endicott X C. Barbara Dane) This new Hybrid has done very well where it has been shown. It has several Awards to its credit. It is a well shaped White which blooms during September, October and November. The growth of the plant is very good and the plant is of a compact habit, and gives good account of itself in very small sizes.	4½" Pots 5" Pots	\$30.00 \$35.00
290	Lc. Bou Filippo (Lc. Windermere "A.M." X C. Mossiae) This cross has been so outstanding in this particular number and an earlier number, No. 285, that we have repeated the cross over and over again. Season was one of the main questions in making this cross. Mossiae in the make-up has taken care of this. Blooming time is March and April, making it a valuable Easter Hybrid. The shape is always very good, the texture is far better than straight Mossiae and the color is always darker than Mossiae. In fact, we simply say it is a glorified Mossiae.	5" Pots 5½" Pots	\$25.00 \$30.00
299	C. Barbara Billingsley (C. Joan Manda X C. Trianae "Broomhills Variety") We have bloomed this cross for the past three years. The results have been most satisfactory. Flowers are of very good texture, large and very well shaped. One of the fine types was awarded an "F.C.C." at the American Orchid Society Meeting in February 1947.	4" Pots 4½" Pots 5" Pots	\$30.00 \$35.00 \$40.00
302	Lc. Vandeletta (Lc. Ibbie X C. Leda) A bid for flower production was the thought behind this particular cross. This has been fulfilled with the result of an extremely dark and interesting type of flower. Substance is exceptionally firm and all the flowers have a very high sheen which glistens in bright sunlight or strong artificial light. The shape of the flower is very good. The presence of C. Bowringiana in the make-up of this Hybrid assures strong growth. We have had as many as eight flowers on a stem.	4½" Pots 5" Pots	\$20.00 \$25.00
317	Lc. Vandeletta (Lc. Ibbie X C. Leda) We refer you to Description under No. 302.	4½" Pots 5" Pots	\$20.00 \$25.00
318	Lc. Vandeletta (Lc. Ibbie X C. Leda) We refer you to Description under No. 302.	4½" Pots 5" Pots	\$20.00 \$18.00
319	C. Oritani Alba (C. Enid Alba X C. Princess Royal Alba) This is a repeat cross of an old dependable White Colored Lip. Two very select parents were used and the result has been most gratifying. The Hybrid blooms during September, October, November and December. Flower production is extremely good. Many of the single lead plants make two growths in a year and it isn't at all uncommon to have four or five flowers per stem. The color is an outstanding paper White. The lips are all highly colored and the shape is always good.	4½" Pots 5" Pots 6" Pots	\$30.00 \$35.00 \$40.00

Cross No.	Name, Parentage and Description	Size	Each
324	Lc. Bergenfield (C. Titrianae X Lc. Cynthia Church) We choose to call this Hybrid strange. We say this because we have never had a Hybrid where the results from one are so entirely different from the other. We have had some very large spectacular flowers. All of the lips of the flowers have been extremely interesting and a great many are of a dark velvety fuchsia color. The plant is one of the strongest growers we have in our collection.	4½" Pots	\$20.00
		5" Pots	\$25.00
330	C. Gigas X Bc. Imperialis A highly colored Brassocattleya of wonderful texture and fine shape is the result here. Blooming season, strangely enough, is November, December and January. The plant is an exceptionally fine grower.	5" Pots	\$25.00
		5½" Pots	\$30.00
340	C. Daniel Ryerson (C. Woltho X C. Remy Chollet) A Winter blooming Cattleya, blooming November and December has resulted from the union of these fine parents. Flowers are well shaped and have exceptionally dark lips. Growth is very good.	4½" Pots	\$20.00
		5" Pots	\$30.00
342	Lc. Eric Brotherson (Lc. Monora X C. Remy Chollet) Both Lc. Monora and C. Remy Chollet bloom in the early Winter period, making the result of a union of this type a valuable one because of the Christmas blooming period. It is a valuable asset for private growers also as they are in need of flowers at this particular season of the year for flower show purposes. The plant is a strong grower and flowers are exceptional in size.	4½" Pots	\$20.00
		5" Pots	\$25.00
344	Lc. Jemima McMahon (Lc. Britannia Alba X C. Lady Alexander Alba) Lc. Jemima McMahon has a blooming season through the months of April and May. It is a very strong grower.	4½" Pots	\$25.00
		5" Pots	\$30.00
345	Lc. Louis Dorp (Lc. Hertha X C. Mossiae "Oliver Lines") The problem of having Spring blooming Hybrids with a quality better than Mossiae which are wanted during Mossiae time has been accomplished here. The best description we can give of this particular Hybrid is that it is a glorified Mossiae. The color is darker than most Mossiaes, shape is better, texture is better and flower production is the same as Mossiae. Growth, because of the large amount of Mossiae, is very good.	4½" Pots	\$20.00
		5" Pots	\$25.00
369	C. Clementine Goldfarb (C. Cybele Alba X C. Snowden) This is a repeat cross of a very strong growing White Hybrid. We have a number of this Hybrid that are blooming from an earlier cross. The excellent results have prompted our remaking this fine cross. We have already bloomed a great many of the new batch. Results have been identical with the first batch. One of Clementine Goldfarb's assets has been its productivity.	4" Pots	\$16.00
		4½" Pots	\$18.00
		5" Pots	\$25.00

Cross No.	Name, Parentage and Description	Size	Each
379	Lc. Westwood (Lc. Sagana X Lc. Walter Jewell) Two very highly colored Hybrids were used here. Both are very excellent growers. We have flowered a number of the plants which have taken up a great number of the good qualities of both parents.	4" Pots 4½" Pots 5" Pots	\$15.00 \$16.00 \$20.00
380	C. Trianae (Extra Fine Dark) X Lc. Audrena "Regina" A Winter Hybrid of good color and character is the quest here. We believe that the parents which were used will absolutely produce this type plant. A number of the plants have bloomed and they are very satisfactory. Growth is exceptional.	4" Pots 4½" Pots	\$16.00 \$20.00
381	Lc. Madeline McDonald (C. President Wilson Alba X Lc. Canhamiana Alba) The result here is a large, well shaped flower which blooms during the months of December, January and February. The sepals and petals are a distinct paper white. The lips of most of the Hybrids have been of a dark fuchsia color. As can well be imagined, when parents are taken into consideration, the Hybrid is a very strong grower.	4½" Pots 5" Pots	\$20.00 \$25.00
393	Lc. Florence Pickard (Lc. Jane Dane X Lc. Britannia) The season for this cross is November through February. Excellent forms of White with fine colored lips have resulted from this union. Growth is exceptional.	4½" Pots 5" Pots 5½" Pots	\$25.00 \$30.00 \$35.00

Phalaenopsis

S25	Phalaenopsis Katherine Siegwart "Var. Helvetia" X Phalaenopsis Doris "Var. the Best" Phalaenopsis Katherine Siegwart "Variety Helvetia" is an excellent flower producer that starts blooming about Christmas time and continues through June. The flowers are exceptionally large (measuring up to 5 inches across), their texture is extremely heavy and they are very long lasting. The Phalaenopsis Doris used in this cross was one of the finest and largest we have ever seen anywhere, and the flowers are well shaped and paper white in color.	1¾" Pots	\$ 1.75
S26	Phalaenopsis Doris X Self This is a self cross of one of the largest and finest Phalaenopsis Doris, and was made to fill the demand for plants of this fine white Phalaenopsis whose name is so well known to Orchid growers everywhere. These are very strong seedlings ready for transplanting to larger pots.	1¾" Pots	\$ 1.75

Non-Warranty

WE, H. PATTERSON & SONS, ORCHIDHAVEN, give no warranty, express or implied, as to the productiveness of any of the plants we sell and will not be in any way responsible for the crop. Our liability in all instances is limited to the purchase price of these plants.

H. PATTERSON & SONS
332 East Main Street Bergenfield, N. J.
Telephone: DUmont 4-0460

Designed and printed by The Beck Engraving Co., Inc.
Philadelphia • New York • Boston



